



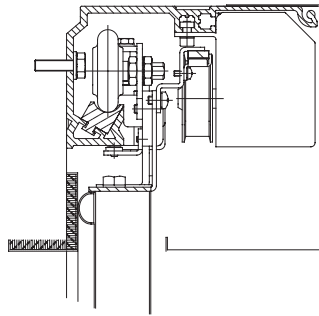
AUTOMATIC SLIDING DOORS

PROFESSIONAL HERMETIC SLIDING DOOR

KH1000

KH1000 is a professional hermetic sliding door developed by IDC/KBB and applies to special locations, which demand excellent airtightness, sound isolation, and radiation protection.

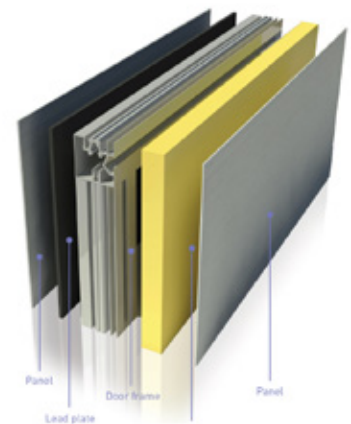
KH1000 uses polyurethane high-pressure forming technology, which allows the door to be lighter, while strengthening sound and heat isolation, and energy savings. It has been highly welcomed for its dustproofing, fire-proofing, air-proofing and radiation protection.



SPECIFICATIONS

Clear Passage Width	23 5/8" ~ 59 1/16" (600~1500mm)
Clear Passage Height	82.68" ~ 102.36" (2100~2600mm)
Maximum Opening Force	120kg
Power Supply	220V ±10%
Rated Power	100W (Single Drive)
Ambient Temperature Range	-15°C ~ 55°C
Relative Humidity	≤85%

IDC/KBB hermetic sliding doors use a specially designed track along with special rubber attached to the inside and downside of the door. In the closing process, the door compresses the rubber to the frame achieving the hermetic effect.



DOOR BODY

	STANDARD	DOUBLE-MOTOR DRIVEN		
Surface Material	2mm aluminum plate	Stainless steel plate	Aluminum composite plate	Other materials
Surface Treatment	Coating	Stainless steel color	Aluminum composite plate color	Others
Lead Protection	°	One lead equivalent	Two lead equivalent	Four lead equivalent
Anti-strike Strip	•		°	
Observation Window	•		°	

Note: • is available ° is not available

Design and specifications are subject to change without notice, as they are based on product development

International Door Closers, Inc.

COPYRIGHT 2018 INTERNATIONAL DOOR CLOSERS, INC

West: 800-544-4422 • East: 800-225-6737

www.intldoorclosers.com



AUTOMATIC SLIDING DOORS

SPARE PARTS LIST

<p>Drive Unit</p> 	<p>Control Unit</p> 	<p>Radar (Eagle 6)</p> 	<p>PSA Control Panel</p> 
<p>Supporting Beam</p> 	<p>Carriage Wheel</p> 	<p>Belt Clamp</p> 	<p>Toothed Belt</p> 
<p>Reserve Wheel</p> 	<p>Nylon Track Rail</p> 	<p>Double Drive</p> 	<p>Electro-Mechanical Locking</p> 
<p>Electric Plug Lock</p> 	<p>Stopping Device</p> 	<p>Radar KSS-1M</p> 	<p>Key Switch</p> 
<p>Safety Beam</p> 	<p>Backup Battery</p> 	<p>Operator Cover</p> 	



AUTOMATIC SLIDING DOORS

SURFACE TREATMENT

Anodizing

IDC/KBB keeps the strictest and highest standards in its process. The finish of the anodized aluminum is no exception, offering more than twenty different choices of color and surface texture finishing. Other standards of this stainless material include its wear-resistance, corrosion resistance, electrostatic prevention, amongst other features to meet different architectural styles and demands.



Stainless Steel Cladding

- Mirror surface



- Satin pattern



- Hair pattern



- Carving pattern



- Arenaceous pattern



Coating

IDC/KBB provides two kinds of coating: powder coating and PVDF coating.