



FS23M Dual Failsafe Spacesaver®

BOLT LOCK

Dual Failsafe Spacesaver®

CSFM Listed for locking of perimeter entry and emergency exit doors after business hours

Tested to 1 Million Cycles

Fully concealed and easily installed in 1.75" (4.44cm) frame or door stile

Dual Failsafe

The FS23M dual failsafe feature is available only from IDC. Conventional failsafe locking bolts rely solely on a spring to retract the bolt while the FS23M bolt will unlock with or without the assistance of the spring. This is the only electric bolt lock listed by the California State Fire Marshal for locking of perimeter entrance and emergency exit doors after-hours.

Large repelling magnets are located within the bolt and strike. When power is interrupted the bolt is retracted and held back by a spring. Should the spring fail, repelling magnets eject the bolt from the strike, unlocking the door.

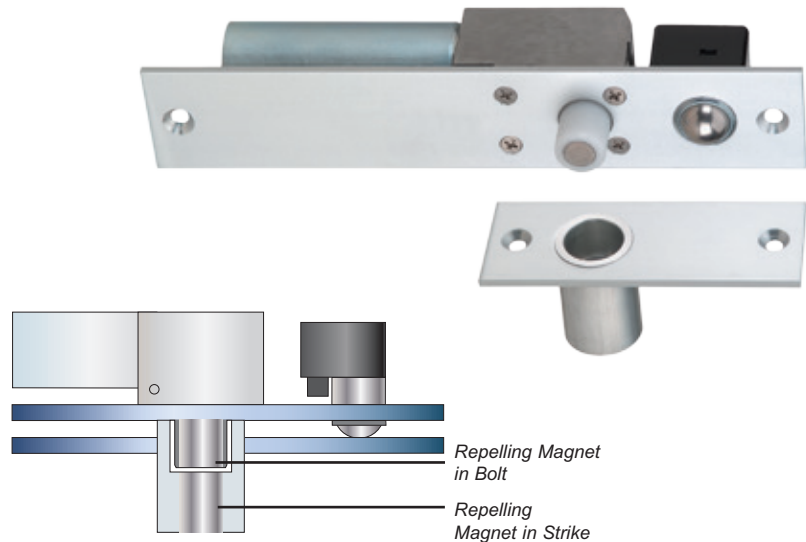
CSFM Bi-Annual Testing

The IDC FS23M has been thoroughly tested by Underwriters Laboratories and cycled for 1 million operations. In addition, an unannounced follow-up inspection is conducted bi-annually by a California State Fire Marshal approved independent test laboratory. Locks are selected by the inspector at random from stock. They are then tested for operation without the assistance of the spring.

Bolt Design

The bolt is made of a lightweight and extremely resilient nylon material. While lack of weight enables the magnet to eject the bolt, an inherent feature is powerful and smooth operation. The longevity of this lock is unsurpassed compared to electromechanical locks with steel bolts with abrasive metal to metal interaction. Additional bolt features include:

- 2500lbs bolt strength
- Hardened Magnet Core, Resistant to metal cutting saws



All Spacesaver® lock solenoids are manufactured by IDC to precision specifications. IDC solenoids are capable for superior overall performance in both force and longevity, providing years of service compared to other manufacturers off-the-shelf or commercial grade designs

Specifications Grade Solenoids

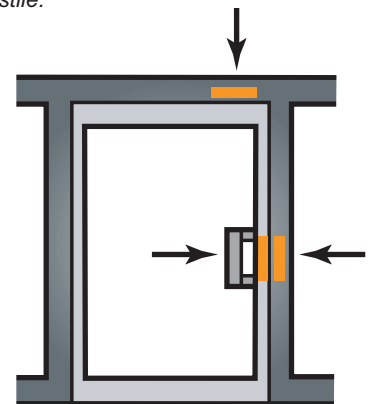
The IDC designed and patented FS23M is locked when energized. Recommended for safety applications, the door unlocks automatically when power is interrupted by the access control, power failure or a signal from the fire life safety system.

Application

While designed for perimeter applications the performance characteristics of the FS23M make it the first choice for all interior or exterior openings where the use of an electric bolt lock is applicable.

Three Point Installation

IDC Spacesaver locks may be mounted in the frame header, side jamb or door lock stile.



3774-0324:001



GWXT.R11695
GWXT7.R11695
Auxiliary Locks

Protected by one or more of the following U.S. Patents:
4,021,065 4,634,155 4,099,752

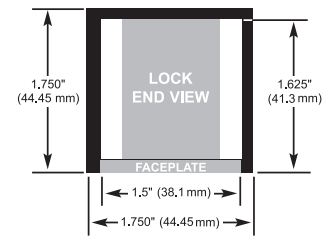
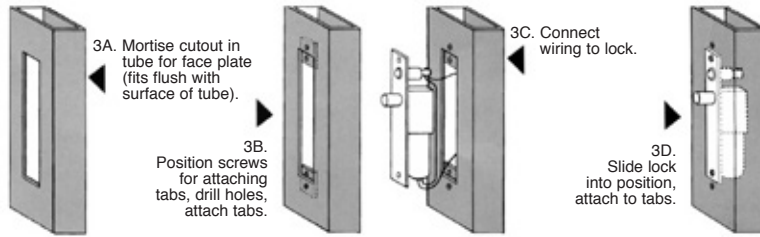
International Door Closers, Inc.

COPYRIGHT 2018 INTERNATIONAL DOOR CLOSERS, INC

West: 800-544-4422 • East: 800-225-6737

www.intldoorclosers.com

Figure 3A, 3B, 3C, 3D: Typical Frame Header or Side Jamb Installation



Model



FS23MI Dual Failsafe 12/24VDC

Finish



628 Clear Anodized Aluminum (std)

Special finishes:

- 335 Black Anodized
- 605 Bright Brass
- 606 Dull Brass
- 611 Bright Bronze
- 612 Dull Bronze
- 613 Oil Rubbed Bronze
- 625 Bright Chrome
- 626 Dull Chrome
- 629 Satin Stainless Steel

Options

Bolt and Door Status

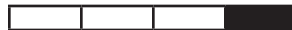


Door and lock status monitoring sensors are installed and concealed in the lock. The need for additional door and frame preparations is eliminated. Magnetic status sensors are behind the faceplate to inhibit tampering. The DPS mechanical status switch is recommended for minimum security applications only.

Applications include: Remote Door and Lock Status; Mantraps; Air/Clean Rooms; Communicating Bathrooms; Door Hold Open Alarms and CCTV Activation.

- B** Magnetic Bolt Status Switch
SPDT 0.25 Amp @ 30VDC
Indicates bolt locked and bolt unlocked.
- D** Mechanical Door Position Switch
SPDT 5 Amps @ 30VDC
Integral to the auto relock ball switch assembly. Indicates, door closed and door open. Recommended for minimum security applications only

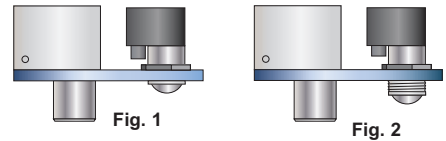
AC Operation



BR64XL Rectifier for AC operation

Field Adjustable Auto-Relock Switch

The automatic relock switch keeps the bolt retracted while the door is open. The door depresses the ball switch assembly on closure, causing the bolt to project automatically, locking the door. In addition, the ball switch assembly is bidirectional, permitting the locks to be used on single swing and sliding doors.



The auto relock assembly is field adjustable to compensate for wide door gap. (See Figure 1&2.)

Specifications

Face Plate:

8"L x 1.5"W x 0.125"D
(203.2 x 38.1 x 3.175mm)

Strike:

4"L x 1.5"W x 0.755"D
(101.6 x 38.1 x 44.5mm)

Frame Inner Dimension Requirements:

8"L x 1.5"W x 1.625"D (See figure 4)
(203.2 x 38.1 x 41.3mm)

Bolt Material:

Nylon with center magnet

Bolt Diameter: 0.0625" (15.875mm)

Bolt Throw: 0.5" (12.7mm)

Mounting Tabs:

Two aluminum mounting tabs are provided for easy lock installation. See figure 3B.

Dual Voltage Coil:

0.45 Amp @ 24VDC Continuous Duty
0.9 Amp @ 12VDC Continuous Duty