



5 YEAR WARRANTY

[Click Here For Info.](#)

ALL GLASS DOOR CONCEALED CLOSER D200-SA SERIES

HANDICAP & STANDARD

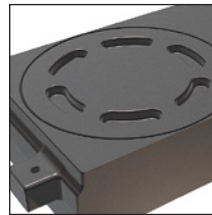


"A" Short Type End Loading Arm (1" Depth Top Rail)

FEATURES

- I.D.C. provides **LEAK-FREE** guaranteed performance under the most demanding conditions.
 1. Steel spring cap is now on top of closer body utilizing a new high performance O-Ring and epoxy sealed threads for double protection.
 2. New automotive type heavy duty spindle seal replacing old standard O-ring technology.
 3. All three adjustment valves now with two high performance O-rings for double protection.
 4. Steel end caps incorporating new high performance O-rings and also epoxy sealed threads for double protection.
 5. Adjustable back check after 80° to prevent the door from slamming open.
- **CENTER HUNG DOORS:** Double or Single Acting Door (Door stop applied to frame renders unit Single Acting). "A" type short end loading top arm supplied for smaller top rail applications.
- 3/4" spindle length for better door support.
- Built in positive back stop and hold-open positions available:
 - 105° Back Stop with Hold-Open
 - 105° Back Stop - no Hold-Open
 - 90° Back Stop with Hold-Open
 - 90° Back Stop - no Hold-Open
- Standard spring tensions available:
 - **MEDIUM & HEAVY**
- Three control valves: Closing speed, latching speed and back check, fully adjustable after installation.
- Adjustable 3010-DP dual purpose radial ball-bearing bottom pivot set is provided for floor or threshold mounted (end loading) center pivoted installation.
- Cast Iron Body fits in aluminum header or transom bar as small as 1-3/4" x 4".
- Positive centering for alignment and to hold door closed against any normal wind or draft.
- Stable hydraulic door check fluid for any climatic operation and constant lubrication.
- 5-3/4" Short "A" Arm (measured from center line of spindle to end of arm).

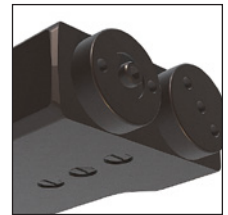
NEW IMPROVED FEATURES



1) Steel spring cap is now on top of closer body utilizing a new high performance O-Ring and epoxy sealed threads for double protection.



2) New automotive type heavy duty spindle seal replacing old standard O-ring technology.



3) All three adjustment valves now with two high performance O-rings for double protection.

4) Now with steel end caps incorporating new high performance O-rings and epoxy sealed threads for double protection.

5) Adjustable back check after 80° to prevent the door from slamming open.

Center Hung Doors: Complete units for aluminum doors and frames are furnished with top arm assembly (adjustable 'S' side loading, "A" end loading, "K" end loading or "PT" end loading), adjustable dual purpose 3010-DP bottom pivot set for floor or threshold mounting (side or end loading) and 3010-FS anchor set with all fasteners.

"S" type side loading top arms and 3010-DP adjustable dual purpose pivot set and 3010-FS anchor set will be furnished unless otherwise specified.

"A" type, "K" type or "PT" type end loading and "JO" or "VO" type offset arms are optional, but must be specified.

"G" and "GE" type pivot sets are available, but must be ordered separately.

Offset Hung Doors: Complete units for offset pivoted or butt hinged aluminum doors and frames are furnished with a "JO" or "VO" type offset arm and 3010-FS anchor set with all fasteners.

(Offset Pivots or Butt Hinges not included. Top Door Stop/ Arm Cover by others – fabrication drawings available.)

International Door Closers, Inc.

COPYRIGHT 2021 INTERNATIONAL DOOR CLOSERS, INC

West: 800-544-4422 • East: 800-225-6737

www.intldoorclosers.com




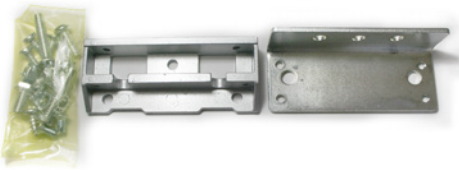
DOOR SIZE CHART

DOOR SIZE	SPRING TENSION	TYPE	MODEL
31" to 41"	MEDIUM	105° Back Stop with Hold-Open 105° Back Stop - no Hold-Open 90° Back Stop with Hold-Open 90° Back Stop - no Hold-Open	D230-SA D231-SA D232-SA D233-SA
42" to 48"	HEAVY	105° Back Stop with Hold-Open 105° Back Stop - no Hold-Open 90° Back Stop with Hold-Open 90° Back Stop - no Hold-Open	D240-SA D241-SA D242-SA D243-SA

Note: Sizes may vary due to door weight, stack pressure in the building, and wind conditions.

PARTS AND ACCESSORIES

PART NO.

	Body Only or Unit Body Specify: Spring Tension and degree of Back Stop and Hold-Open	D2000-B-31
	"A" Short Type End Loading Arm (1" Depth Top Rail)	3010-SA
	Adjustable Dual Purpose Bottom Pivot Set	3010-DP
	Anchor Set	3010-FS