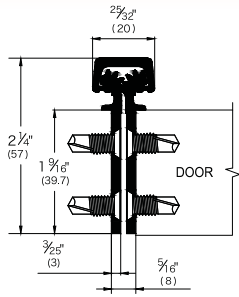
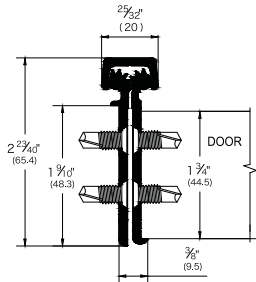


**Countinuous Aluminum  
Concealed/Mortise Geared Hinges**

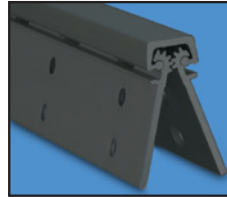
- Any Door Material
- Heavy Duty for high frequency 1 3/4" doors or heavy medium frequency doors up to 450lbs.
- 117FM (Heavy Duty), 217FM (Heavy Duty)



117FM



217FM



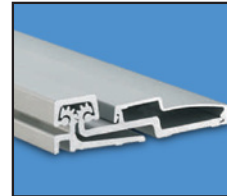
117FM



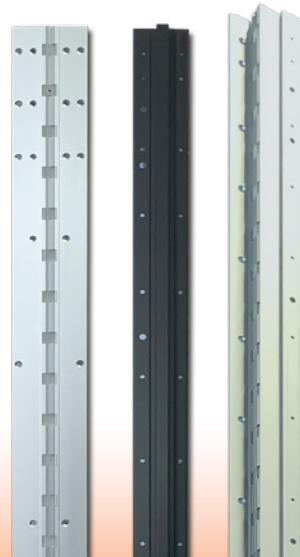
217FM



317FS



417FS



117FM & 217FH	
<b>FASTENERS:</b> (Self-Tapping Screws)	<ul style="list-style-type: none"> <li>• All fasteners as No. 12-24 x 1/16" Type C, FHUC</li> <li>• Heavy Duty Hinges - 10 required for each leaf</li> </ul>
<b>LENGTH OPTIONS:</b>	83", 95" & 120"
<b>DOOR REINFORCEMENT:</b>	<ul style="list-style-type: none"> <li>• None needed to 200 lbs</li> <li>• Use 16 gauge channel over 200 lbs</li> </ul>
<b>FRAME REINFORCEMENT:</b>	<ul style="list-style-type: none"> <li>• None needed to 200 lbs</li> <li>• Use 16 gauge channel over 200 lbs</li> </ul>
<b>FIRE RATING:</b>	Up to 3 Hours
<b>SPECIAL FEATURES:</b>	<ul style="list-style-type: none"> <li>• For new construction</li> <li>• For renovation with new door and / or frames</li> <li>• No mortising of doors or frames required</li> <li>• Will cover hinge cut outs in frames</li> <li>• Flush mount no inset</li> <li>• Frame and door leaf alignment ribs for proper hinge location</li> </ul>
<b>STANDARD FINISHES:</b>	<ul style="list-style-type: none"> <li>• C (Clear Anodized Aluminum),</li> <li>• D (Duro Anodized Aluminum)</li> </ul>
<b>SPECIAL ORDER FINISHES:</b>	<ul style="list-style-type: none"> <li>• PW (Painted White), G (Gold Anodized Aluminum),</li> <li>• BL (Black Anodized Aluminum)</li> </ul>



**RAPID Ship Hinges**

*Countinuous Aluminum Geared Hinges  
Cross Reference Charts*



west@intldoorclosers.com east@intldoorclosers.com

www.intldoorclosers.com



West: 800-544-4422 • East: 800-225-6737

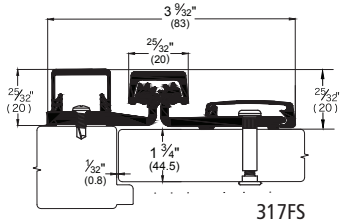
west@intldoorclosers.com east@intldoorclosers.com

www.intldoorclosers.com

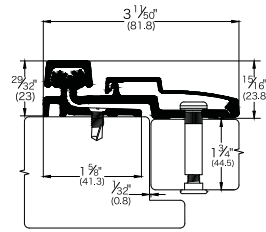


## Continuous Aluminum Full Surface Geared Hinges

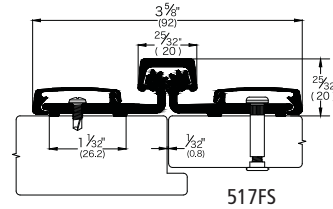
- Any Door Material
- Heavy Duty for high frequency 1 3/4" doors or heavy medium frequency doors up to 450lbs.
- 317FS (Heavy Duty), 417FS (Heavy Duty), 517FS (Heavy Duty)



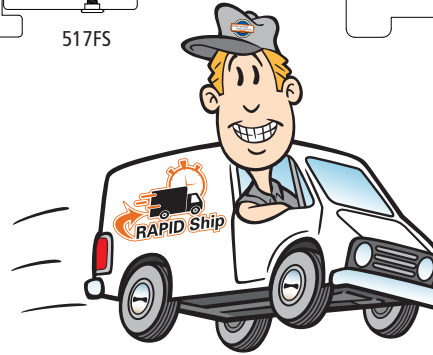
317FS



417FS

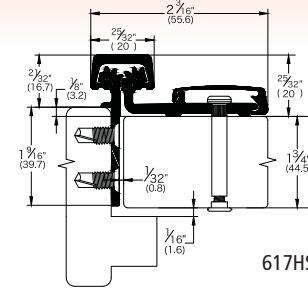


517FS



## Continuous Aluminum Half Surface Geared Hinges

- Any Door Material
- Heavy Duty for high frequency 1 3/4" doors or heavy medium frequency doors up to 450lbs.
- 617HS (Heavy Duty)



617HS



315FS, 417FS, 517FS & 617HS	
<b>FASTENERS:</b> (Self-Tapping Screws)	<b>FRAME PORTION</b> <ul style="list-style-type: none"> <li>• All fasteners as No. 12-24 x 1/16" Type C, FHUC</li> <li>- Heavy Duty Hinges</li> <li>- 10 required for each leaf</li> </ul> <b>DOOR PORTION</b> <ul style="list-style-type: none"> <li>• Thrubolt 1/4-20 x 1 5/8" PCH</li> <li>- Heavy Duty Hinges</li> <li>- 6 required for each leaf</li> <li>• Shoulder bolt 1/4 - 20 x 1" PCH</li> <li>- Heavy Duty Hinges - 6 required</li> <li>• Pan Head Self Drilling No. 12 x 3/4" - Heavy Duty Hinges - 4 required</li> </ul>
<b>LENGTH OPTIONS:</b>	83", 95" & 120"
<b>DOOR REINFORCEMENT:</b>	<ul style="list-style-type: none"> <li>• None needed</li> </ul>
<b>FRAME REINFORCEMENT:</b>	<ul style="list-style-type: none"> <li>• None needed to 200 lbs</li> <li>• Use 16 gauge channel over 200 lbs</li> </ul>
<b>FIRE RATING:</b>	Up to 3 Hours
<b>315FS, 417FS &amp; 517FS SPECIAL FEATURES:</b>	<ul style="list-style-type: none"> <li>• Replacement for existing doors and frames</li> <li>• 7/8" minimum frame</li> <li>• 1/16" inset</li> </ul>
<b>617HS SPECIAL FEATURES:</b>	<ul style="list-style-type: none"> <li>• For new construction</li> <li>• For renovation with new door and / or frames</li> <li>• No mortising of doors or frames required</li> <li>• Will cover hinge cut outs in frames</li> <li>• Flush mount no inset</li> <li>• Frame and door leaf alignment ribs for proper hinge location</li> </ul>
<b>STANDARD FINISHES:</b>	<ul style="list-style-type: none"> <li>• C (Clear Anodized Aluminum), D (Duro Anodized Aluminum)</li> </ul>
<b>SPECIAL ORDER FINISHES:</b>	<ul style="list-style-type: none"> <li>• PW (Painted White), G (Gold Anodized Aluminum), BL (Black Anodized Aluminum)</li> </ul>

### CONTINUOUS GEAR HINGES CROSS REFERENCE CHART

TYPE	IDC	ABH	PBB	PHOENIX	PRECISION	NGP	ROTON	SELECT	PEMKO	MCKINNEY	STANLEY	IVES
Full Concealed	117FM	A110HD	CG31L	GHHD112	GHHD11	HD1800	780-111HD	SL11SD/HD	FMSLFHD	MCK-12-HD	661HD	112HD
Full Concealed Mortise Leaf	217FM	A240HD	CG31L	GHHD224	GHHD22	HD2400	780-124HD	SL24SD/HD	FMHD	MCK-25HD	662HD	224HD
Full Surface	317FS	A570HD	CG33N	GHHD157	GHHD15	HD5700	780-157HD	SL57SD/HD	FSCPHD	MCK-58HD	664HD	157XY
Full Surface	417FS	A210HD	CG33C	GHHD210	GHHD21	HD2100	780-210HD	SL21SD/HD	FSHD	-	665HD	210XY
Full Surface	517FS	-	-	GHHD057	-	-	780-057HD	-	-	-	-	936HD
Half Surface	617HS	A540HD	CG34	-	-	HD5400	780-054HD	SL54HD	HS-HD1	MCK-54HD	663HD	054HD

West: 800-544-4422 • East: 800-225-6737

west@intldoorclosers.com east@intldoorclosers.com



www.intldoorclosers.com